



Mississippi 4-H Forestry



Insects and Disease

Identification

PPB4-0001.00

Test Slide Set: Diseases ₁



Compiled By
Dr. Bob Daniels
Extension Professor
Department of Forestry



Presentation

Prepared by

Kathy Nash

MSU-ES Support Services

AV Reference Room Manager/Information & Graphics Technician

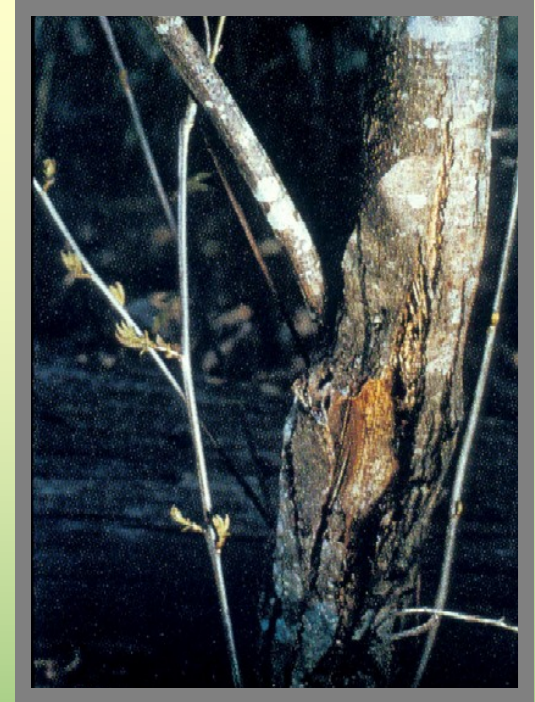


Mississippi State
UNIVERSITY
Extension
SERVICE

Forest



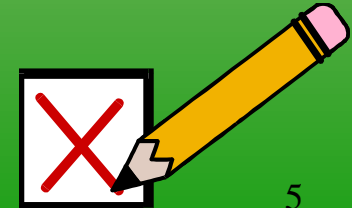
Diseases

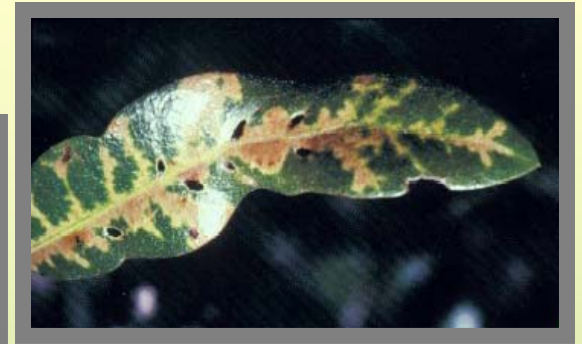
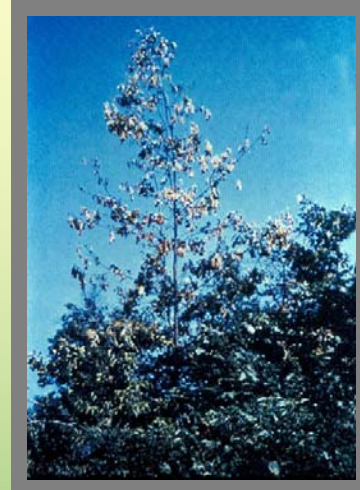
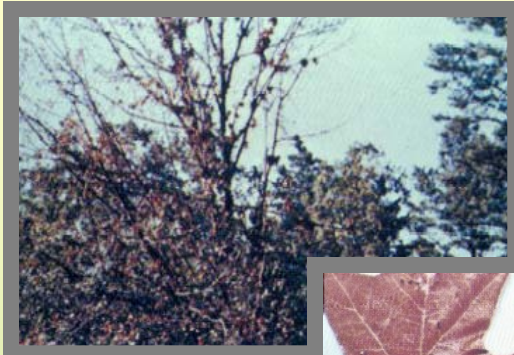


The above pictures are examples of what type of disease:

- Oak Wilt (OW)**
- White Pine Blister Rust (WPBR)**
- Fusiform Rust (FR)**
- Chestnut Blight (CB)**

**Please check
one box:**

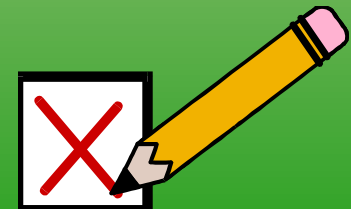




The above pictures are examples of what type of disease:

- Chestnut Blight (CB)**
- White Pine Blister Rust (WPBR)**
- Oak Wilt (OW)**
- Cedar-Apple Rust (CAR)**

**Please check
one box:**

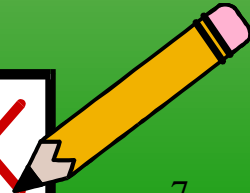


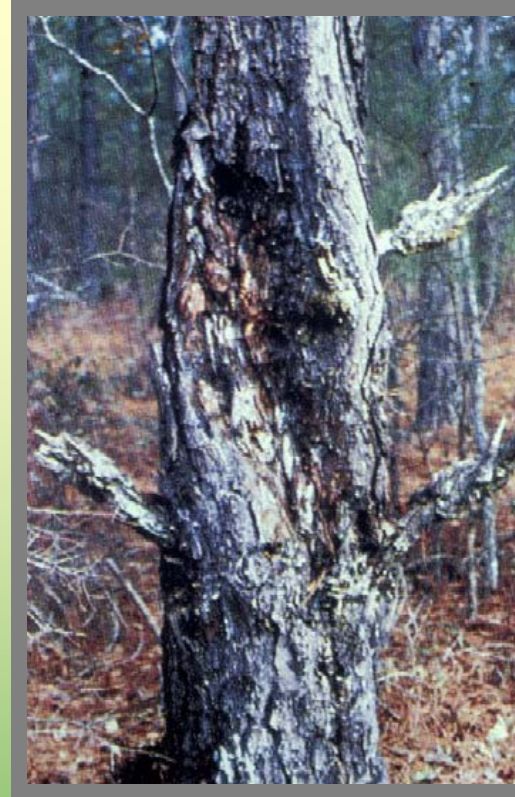


The above pictures are examples of what type of disease:

- Cedar-Apple Rust (CAR)**
- White Pine Blister Rust (WPBR)**
- Oak Wilt (OW)**
- Fusiform Rust (FR)**

**Please check
one box:**

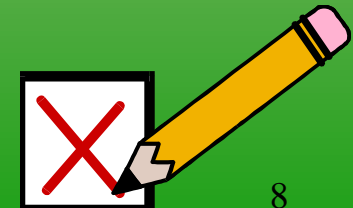


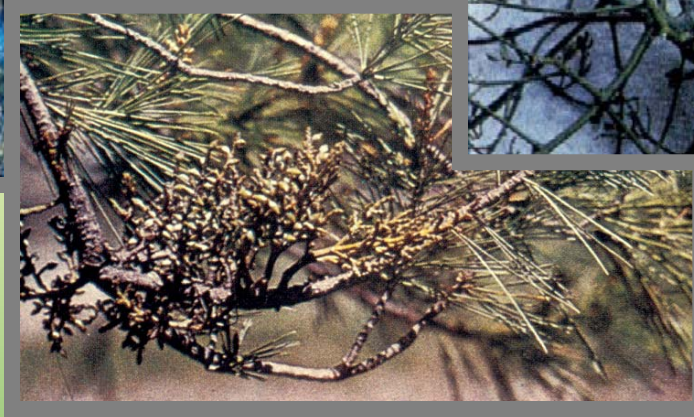
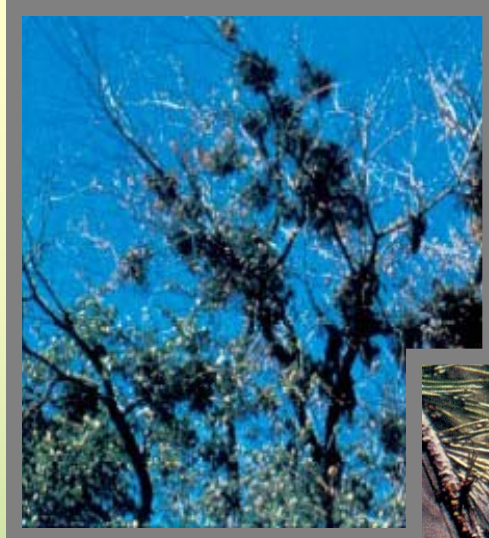


The above pictures are examples of what type of disease:

- Chestnut Blight (CB)**
- White Pine Blister Rust (WPBR)**
- Red Heart**
- Fusiform Rust (FR)**

**Please check
one box:**

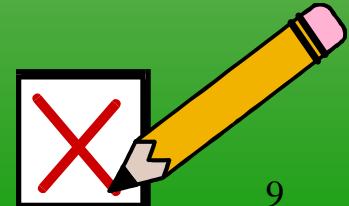




The above pictures are examples of what type of disease:

- Brown Spot (BS)**
- Needle Cast (NC)**
- Dwarf Mistletoe/Mistletoe**
- Red Heart**

**Please check
one box:**

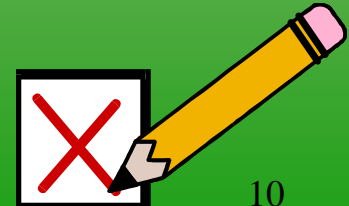


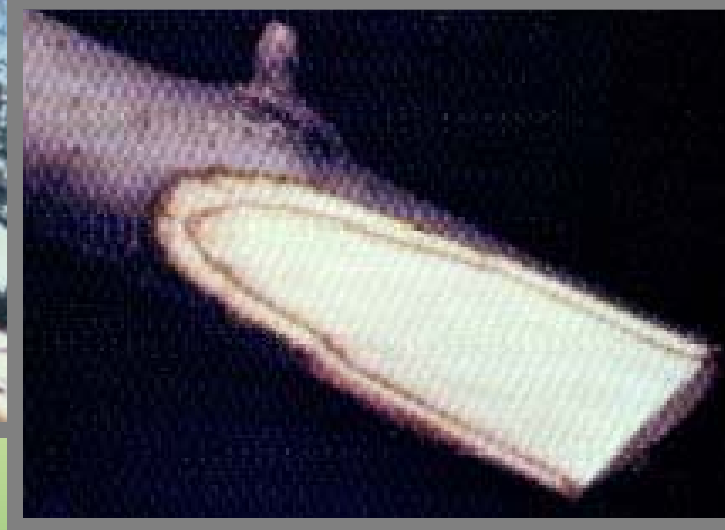
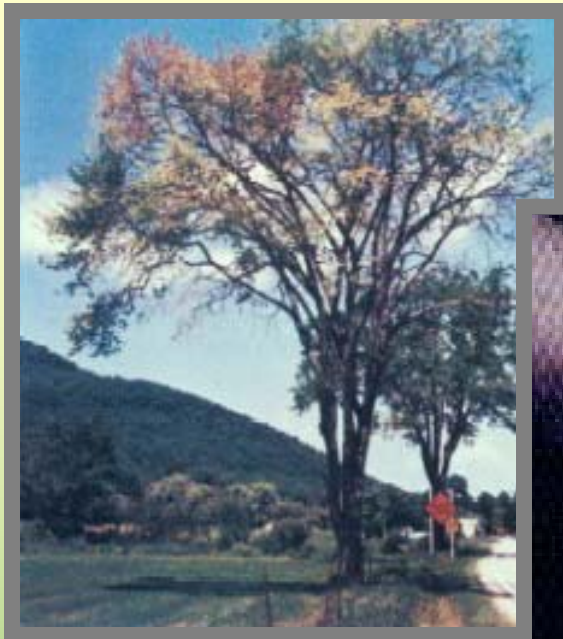


The above pictures are examples of what type of disease:

- Brown Spot (BS)**
- Witches Broom**
- Dwarf Mistletoe/Mistletoe**
- Needle Cast (NC)**

**Please check
one box:**

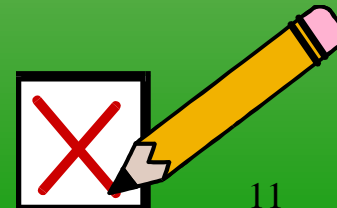




The above pictures are examples of what type of disease:

- Oak Wilt (OW)**
- Chestnut Blight (CB)**
- Dutch Elm Disease (DED)**
- Needle Cast (NC)**

**Please check
one box:**

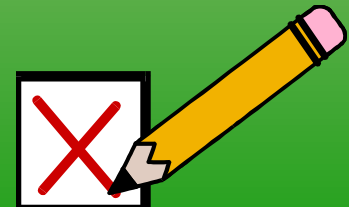


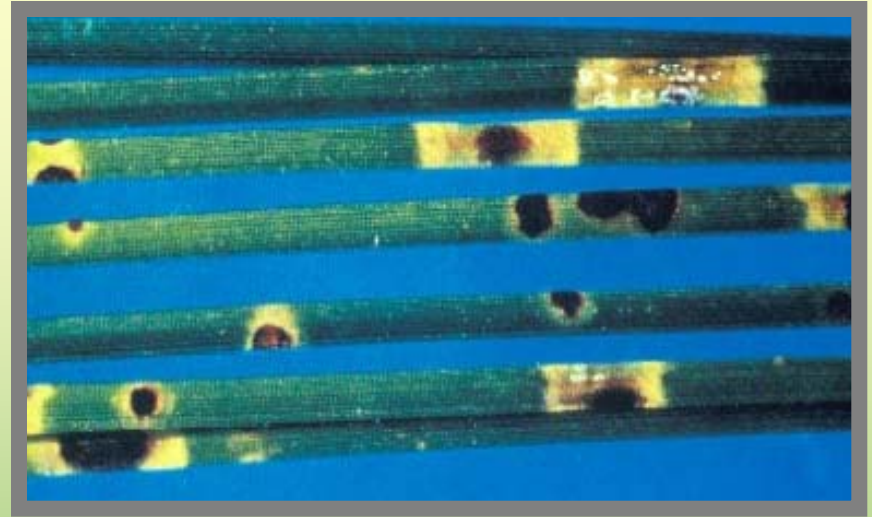


The above pictures are examples of what type of disease:

- Oak Wilt (OW)**
- Chestnut Blight (CB)**
- Black Knot**
- Needle Cast (NC)**

**Please check
one box:**

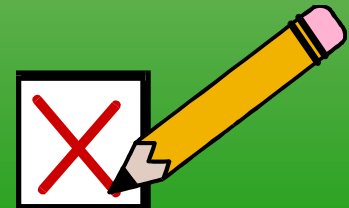




The above pictures are examples of what type of disease:

- Brown Spot (BS)**
- Heart Rot (HR)**
- Black Knot**
- Needle Cast (NC)**

**Please check
one box:**

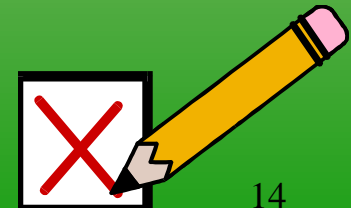


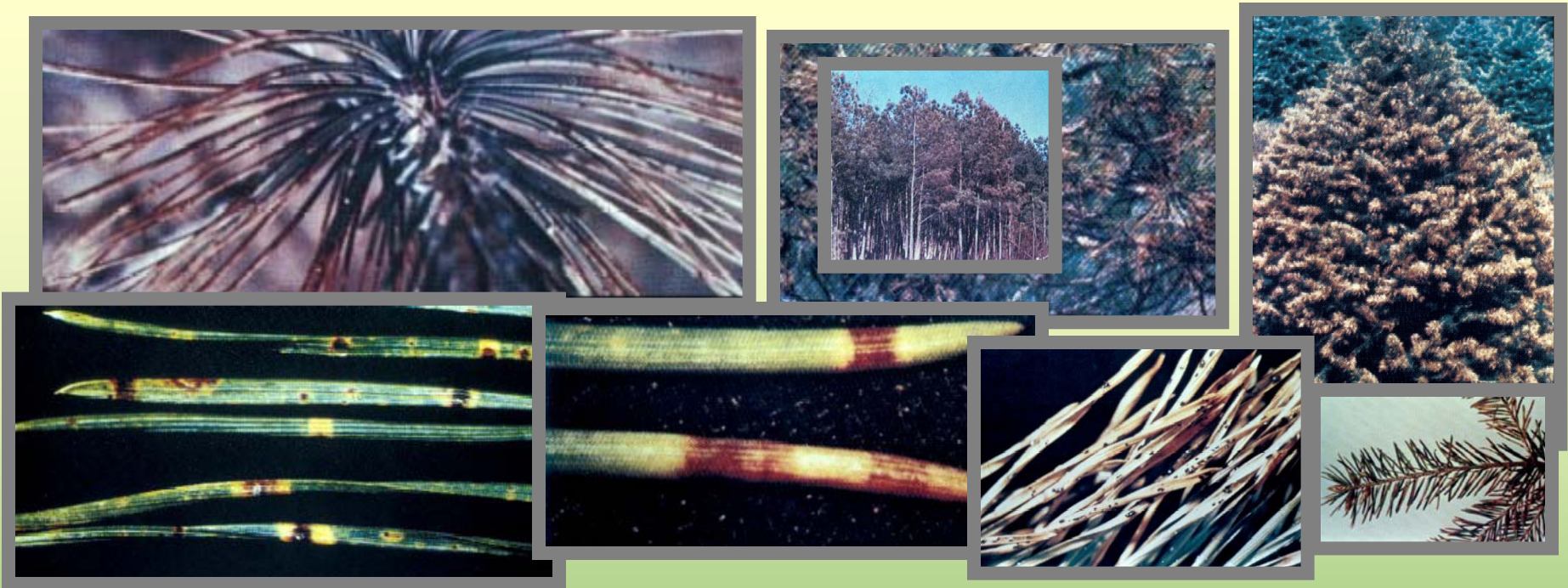


The above pictures are examples of what type of disease:

- Brown Spot (BS)**
- Verticillium Wilt (VW)**
- Black Knot**
- Annosus Root Rot (ARR)**

**Please check
one box:**

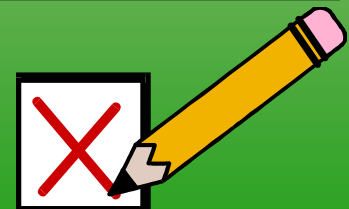




The above pictures are examples of what type of disease:

- Needle Cast (NC)**
- Verticillium Wilt (VW)**
- Cedar-Apple Rust (CAR)**
- Annosus Root Rot (ARR)**

**Please check
one box:**

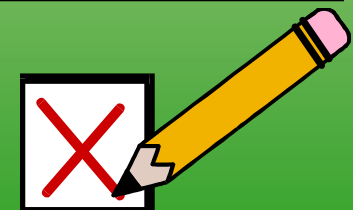


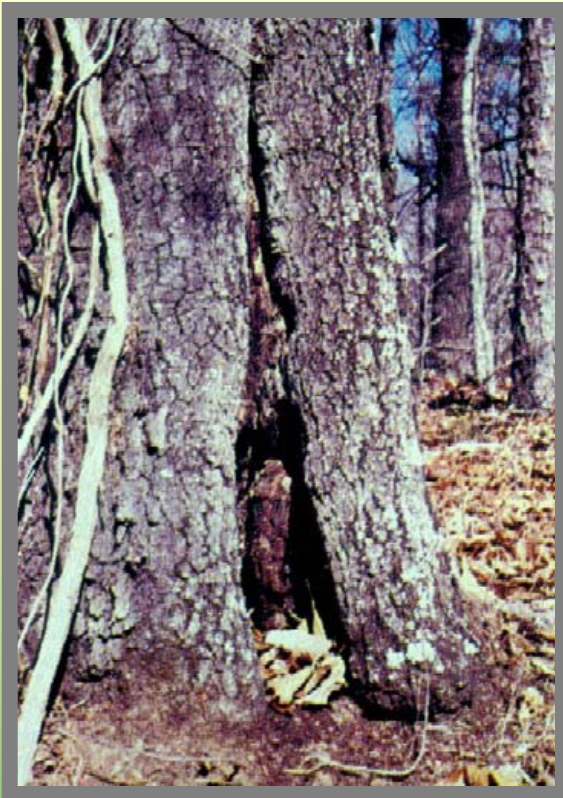


The above pictures are examples of what type of disease:

- Artist Conk**
- Verticillium Wilt (VW)**
- Cedar-Apple Rust (CAR)**
- Hypoxyylon Canker (HC)**

**Please check
one box:**

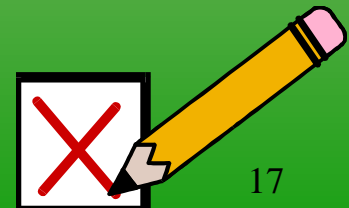


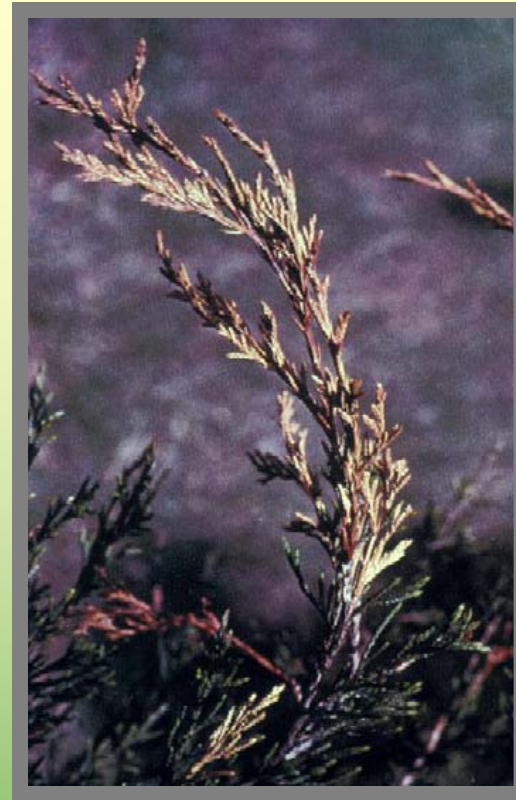


The above pictures are examples of what type of disease:

- Artist Conk
- Phomopsis Blight (PB)
- Heart Rot (HR)
- Hypoxylon Canker (HC)

Please check
one box:

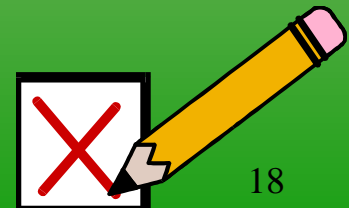


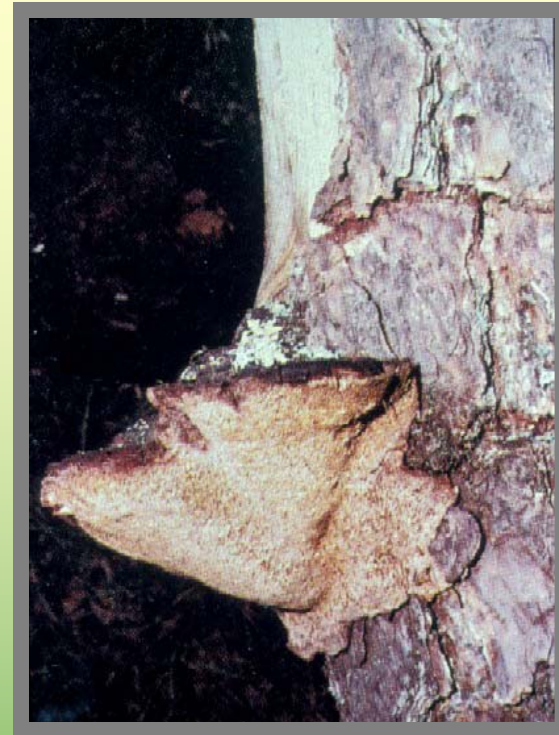


The above pictures are examples of what type of disease:

- Red Heart**
- Phomopsis Blight (PB)**
- Heart Rot (HR)**
- Hypoxylon Canker (HC)**

**Please check
one box:**

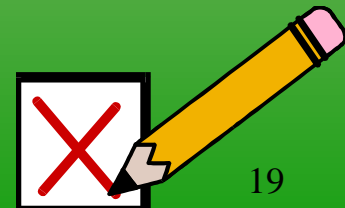


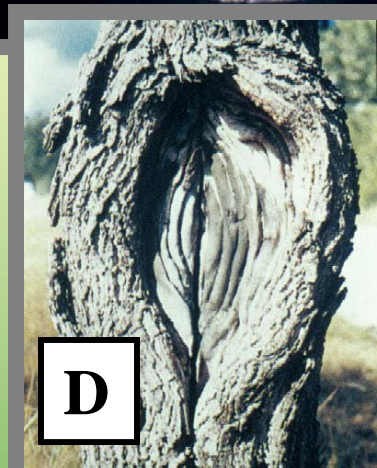


The above pictures are examples of what type of disease:

- Red Heart**
- Phomopsis Blight (PB)**
- Heart Rot (HR)**
- Nectria Canker (NC)**

**Please check
one box:**





The above pictures are examples of what type of disease:

- Artist Conk
- Hypoxylon Canker (HC)
- White Trunk Rot of Birch (WTRB)
- Verticillium Wilt (VW)
- Nectria Canker (NC)

Please match
the picture to
the correct
disease

The

End



Mississippi State
UNIVERSITY
Extension
SERVICE